

Rail Baltica progress in Latvia

Anita Rūdule-Jansone

Project manager of Riga Central Passenger Section,
Railway bridge and embankment design and build (RCS)

2024 May



RAIL BALTICA - Latvia

CONSTRUCTION

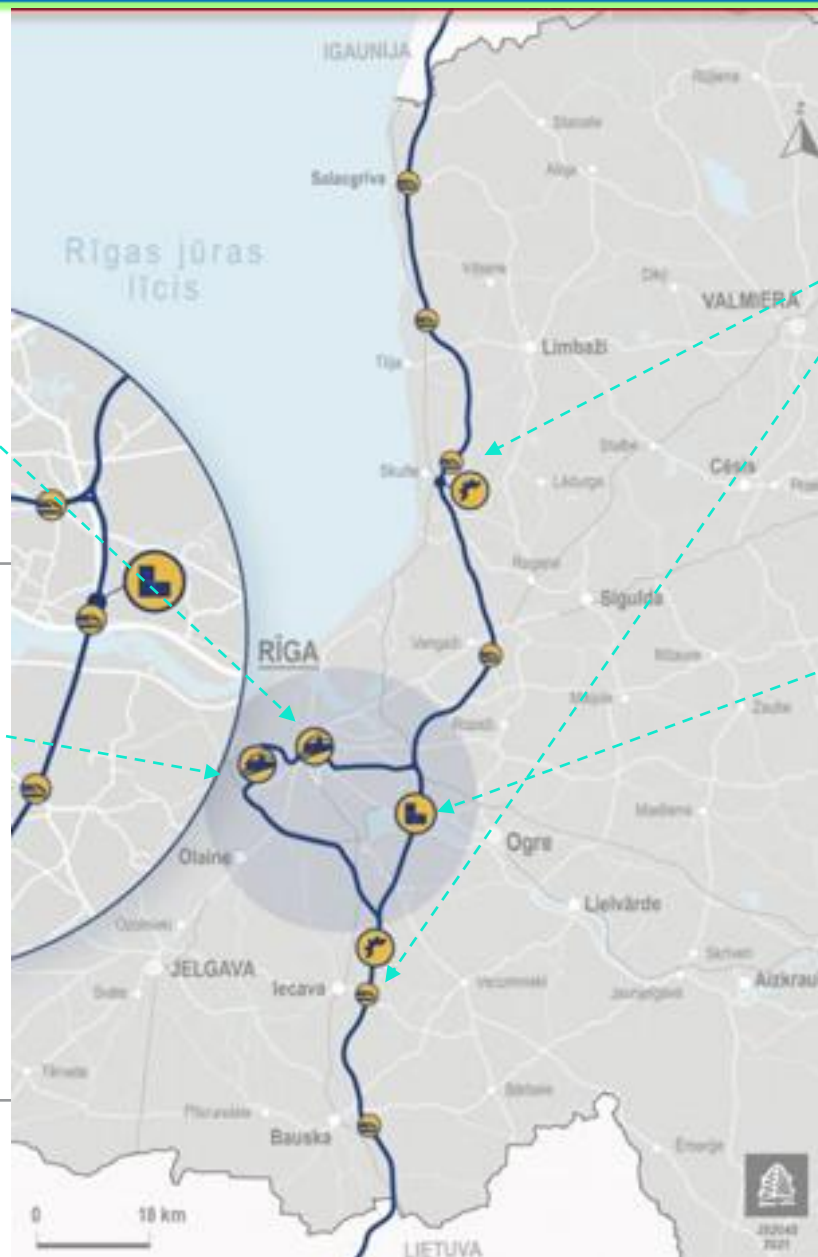
- Rail Baltica Riga Central Station section



- International Airport «Riga» section



- Mainline construction



DESIGN

- Infrastruktūras apkopes punkti Iecavā un Skultē



- Salaspils intermodālais loģistikas centrs



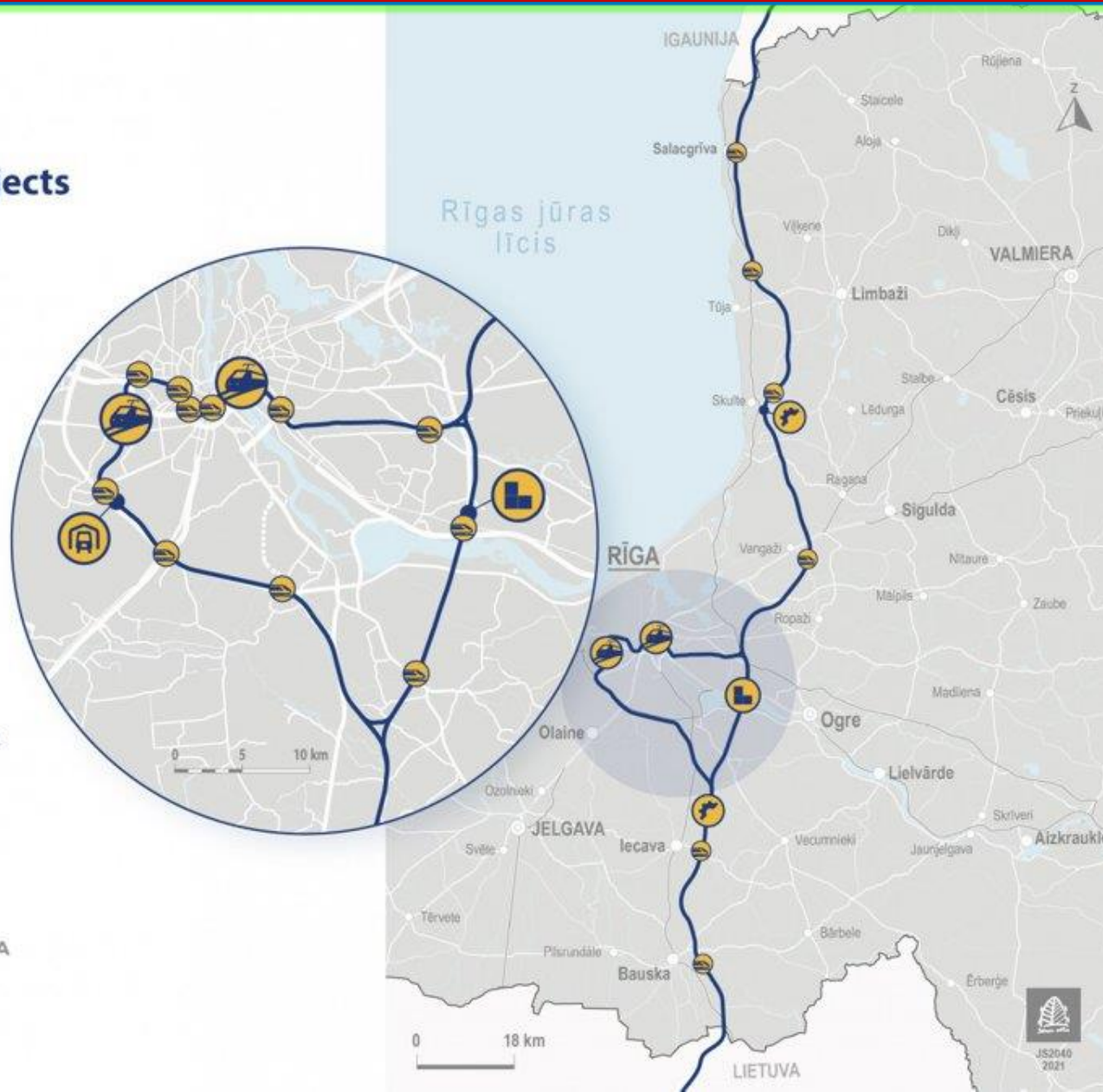
- Regional stations



Rail Baltica main line and infrastructure objects in Latvia

Infrastructure objects:

-  Rail Baltica international stations
-  Rail Baltica regional stations
-  Infrastructure maintenance facilities
-  Rolling stock depot
-  Intermodal freight terminal



Basic functions of SIA «Eiropas dzelzceļa līnijas» (EDZL):

- Expropriation and management of real estate



- Railway infrastructure management model





RIGA CENTRAL STATION

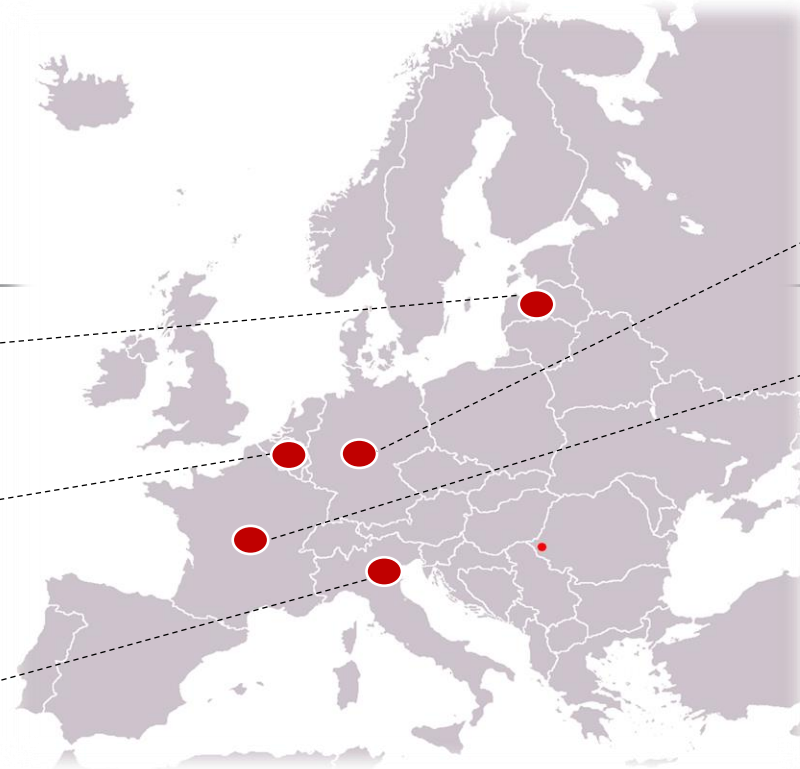


CONTRACTS

DESIGN & CONSTRUCTION:

ASSESSMENT DURING DESIGN & CONSTRUCTION:

Main Contractor:



DESIGN:



SCOPE OF WORKS



- ✓ 10 bridges and overpasses
- ✓ 14 km of old track removed
- ✓ 9 km of 1520 track rebuilt
- ✓ 6 km of new 1435 track built
- ✓ 3 km emergency path
- ✓ 16 600 m² Station building

ACHIEVED RESULTS

PROPERTIES

- ✓ Expropriation:
36 properties
- ✓ Property rights authorizations:
148 contracts



DESIGN

- ✓ Total 8 building permits (BP):
6 BPs - approved
6 BPs - Construction works have been started



COMMUNICATION

- ✓ Stakeholders:
130 industry, infrastructure and NGO partners
30 approval of solutions



CONSTRUCTION PROGRESS



Hours worked from the beginning of the project:

1 594 456

Concrete volume for the whole Riga section: 153 537 m³

Already casted

~68 280 m³



Prefabricated elements for the whole Riga section: 7 699 m³

Already produced

~3 850 m³

(500 beams)

CONSTRUCTION – Multimodal area



Future

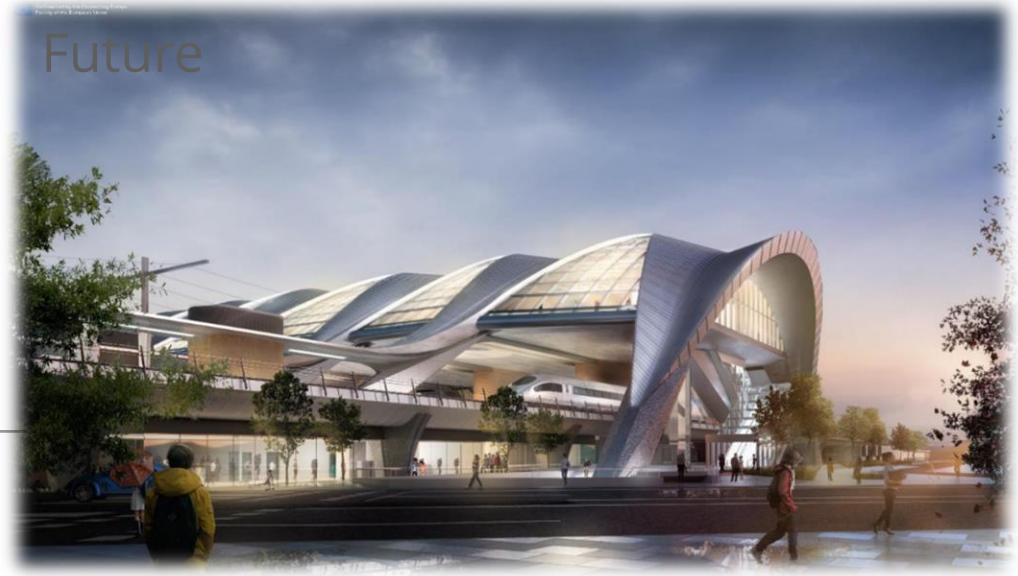
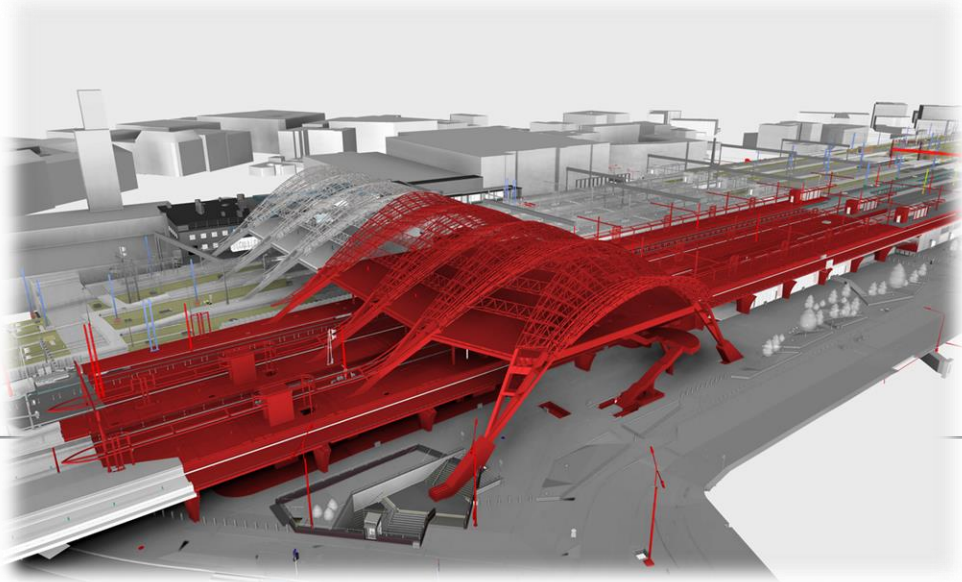


CONSTRUCTION – Station

1862



1960



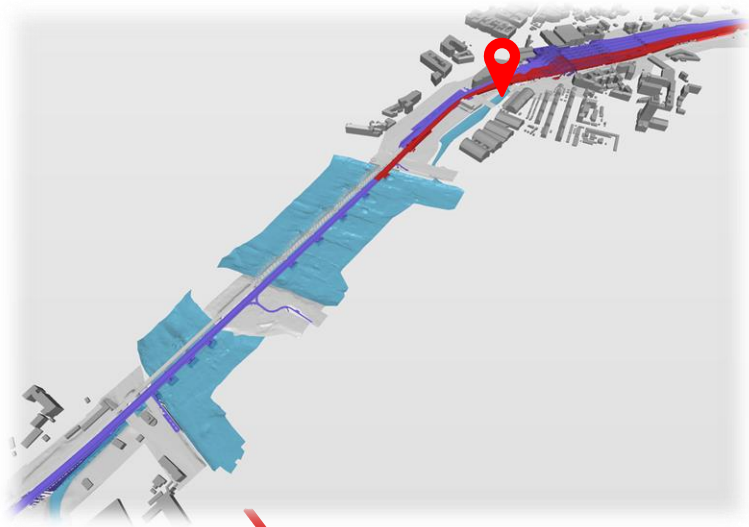
CONSTRUCTION – platform accesses

2023

Future



CONSTRUCTION – Titanic area



CONSTRUCTION – Buss station





THANK YOU FOR YOU ATTENTION!





Supervision of design and construction works

Sergio Bertolet Moreno

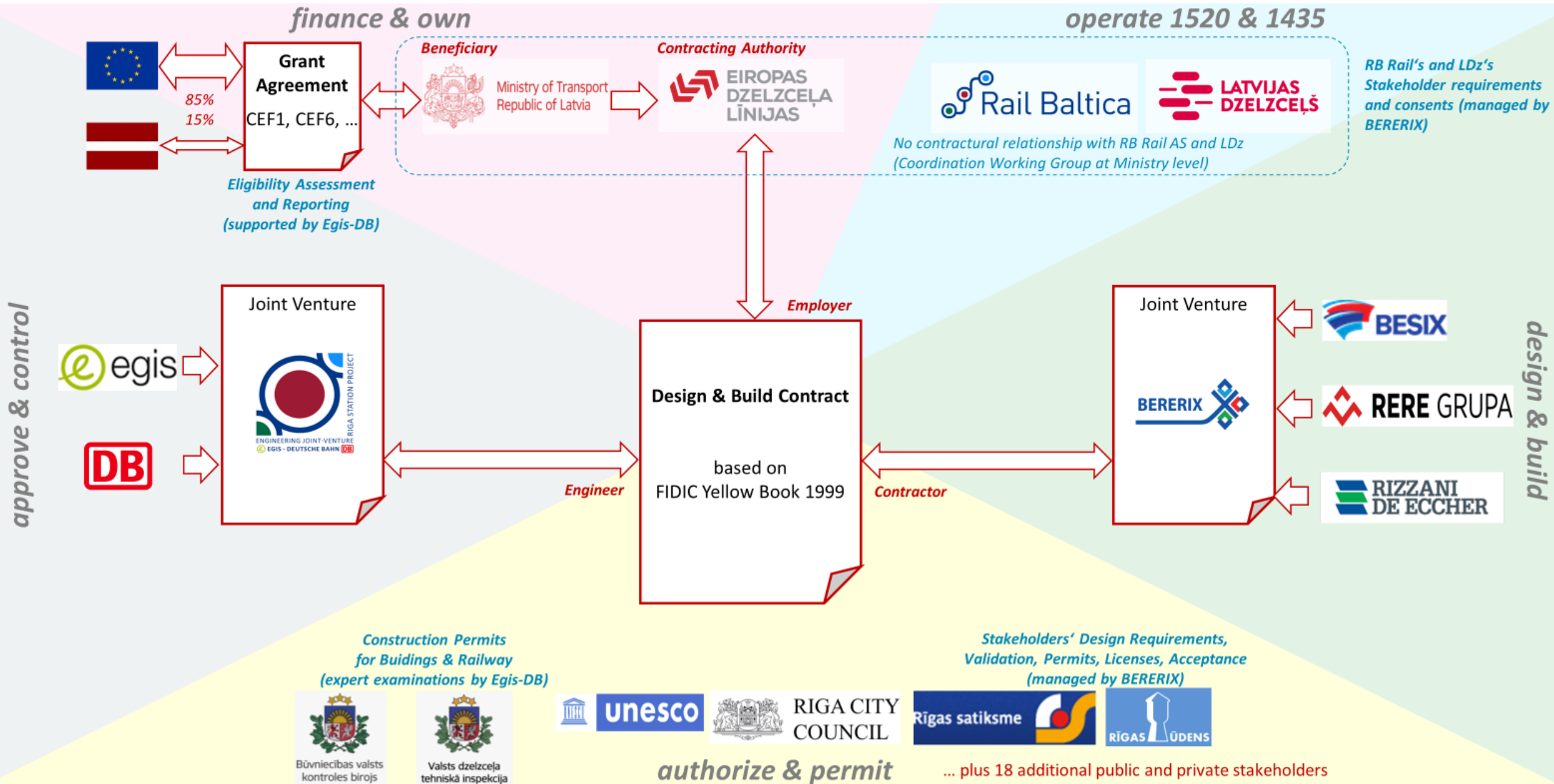
Project Director
Egis

Frank Menter

Deputy Project Director
DB Engineering & Consulting



Contract Structure and Stakeholders



Engineer's Scope of Supply & Services

approve & control



- **Project Management**
 - Contract and claim management
 - Program/ time-schedule review
 - Progress reporting
 - Quantity surveying
 - Financial reporting
 - Document management
- **Systems Integration**
 - Interface management
 - Requirement management
- **Design Review & Expert Examination**
 - Systems Engineering design review
 - Construction Engineering design review
 - Environmental Planning review
- **Construction Supervision**
 - Realization management
 - Construction supervision
 - Construction Phase Operations Planning
- **Testing & Commissioning**
- **Operation & Maintenance Interfaces**



Thank you!



www.edzl.lv



edzl@edzl.lv



Ministry of Transport
Republic of Latvia



Co-financed by the Connecting Europe
Facility of the European Union

